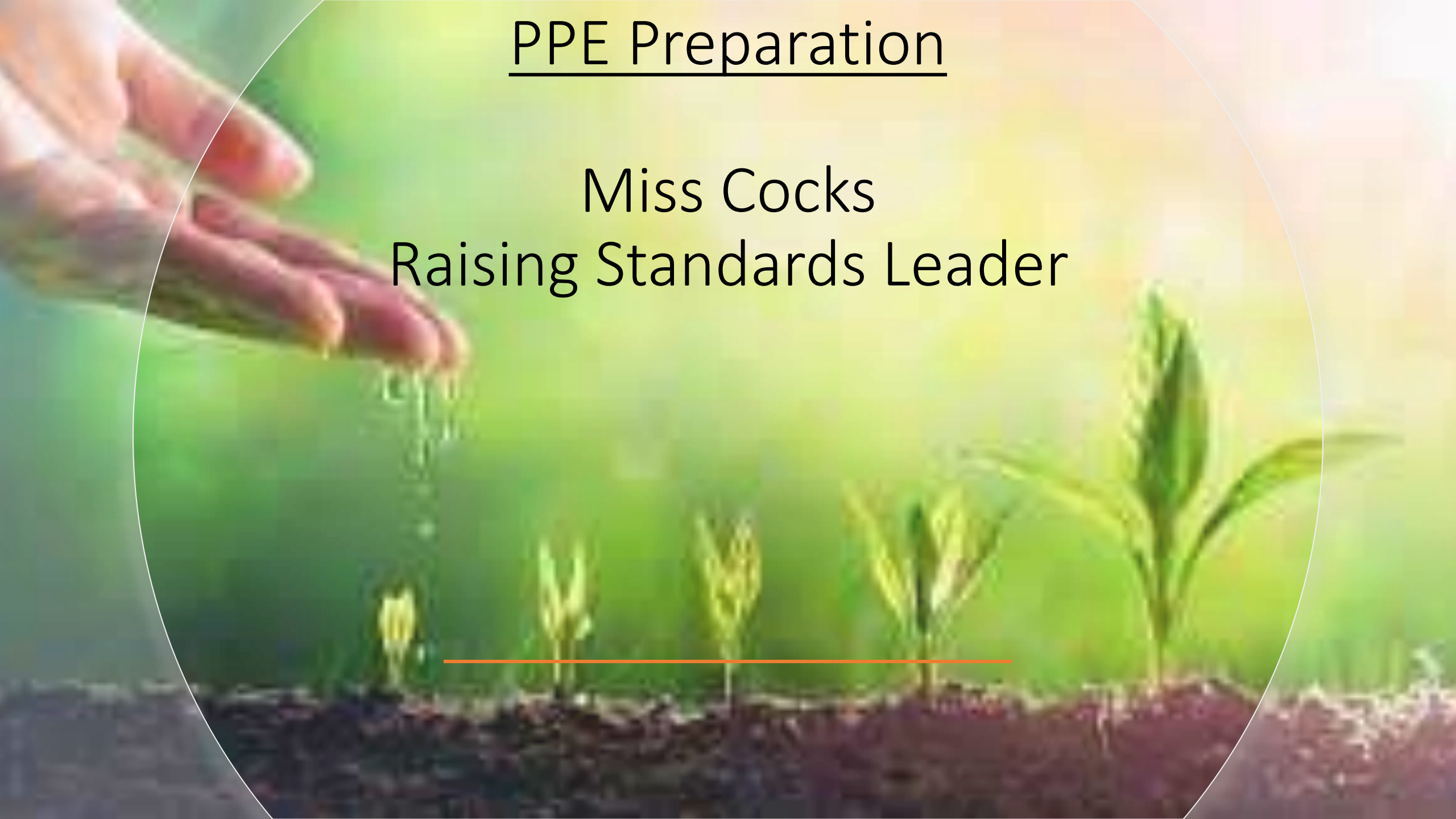


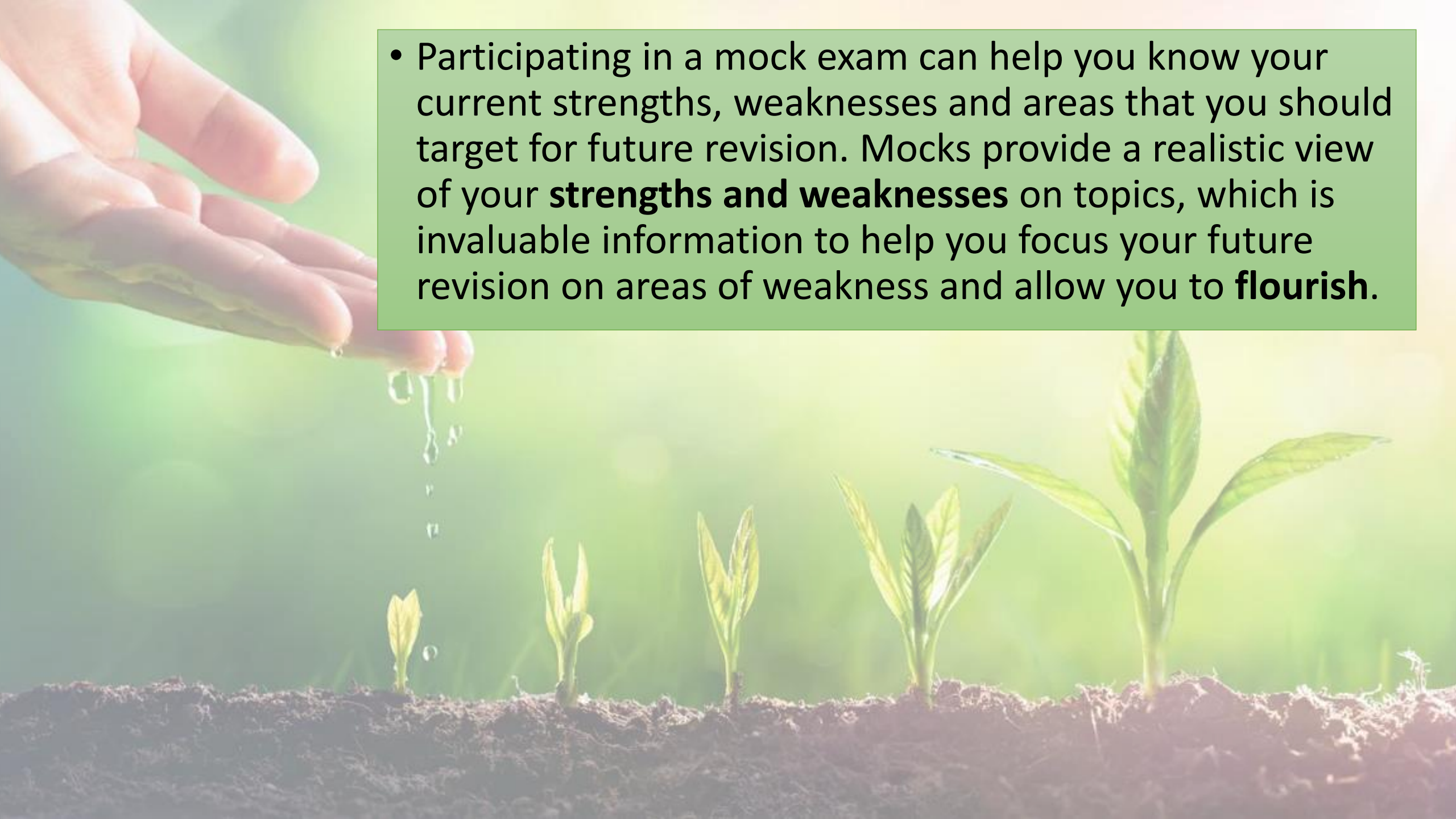
PPE Preparation

Miss Cocks
Raising Standards Leader



How do PPEs help you to flourish?

- Mocks really are beneficial in that they allow you to become comfortable with the exam conditions. This contributes to **mental preparation** for the big day, which is key to being at your best on exam day.
- Professional sports players recognise **visualisation** as one of the best techniques at their disposal when mentally preparing for a competition. Exams are no different, if you can visualise that exam hall and succeeding on the paper, then your confidence levels will rise and you will feel more prepared and ready to be **#AllFlourishing**.

- 
- A hand is shown watering a row of five small green seedlings growing out of dark soil. Water droplets are falling from the hand onto the plants. The background is a soft, out-of-focus green field under bright sunlight.
- Participating in a mock exam can help you know your current strengths, weaknesses and areas that you should target for future revision. Mocks provide a realistic view of your **strengths and weaknesses** on topics, which is invaluable information to help you focus your future revision on areas of weakness and allow you to **flourish**.

- By taking a mock exam, you can feel **more confident** in your abilities and experience a real-world scenario that prepares you for the pressure of an exam hall. This is especially important when it comes to letting go of "imposter syndrome" where students do not believe they are smart enough to succeed in their exams.
- Mock exams help you get into the right frame of mind for **exam success**. They are a great way to **motivate yourself** and remind you that you have the chance to **flourish** – just **believe** in yourself.



You have already been sent a notification of topics ...

You may have also been provided additional resources on Teams from your teachers



YEAR 11 PPE TOPICS FOR ASSESSMENT NOVEMBER 2023

English

English Language	English Language paper 1. Fiction. You will answer 4 reading questions based on an unseen extract. You will then complete a writing section which will be either a story or a description inspired by a picture.
English Literature	English Literature paper 1. You will complete an essay based on your Shakespeare text. This will be the extract only as it is too early for you to be able to respond to the whole text. You will complete an essay based on 'A Christmas Carol'. This is the extract AND the rest of the text.

Mathematics – Please consult with the relevant teacher.

Combined and Triple Science – Please see the Science documents.

Religious Education

Year Taught	Topic	Term
10	Six Beliefs of Sunni Islam and Five Roots of Usul ad Din	3
10	Nature of Allah	3
10	Belief in Angels	3
10	Belief in Prophets and Prophethood	3
10	Belief in holy books of Islam	4
10	Belief in al-Qadr (predestination)	4
10	Akhirah – life after death and judgement day	4



PPE exams will be in the Sports Hall – unless you are told otherwise.

Students in small venues will have a meeting p6 today.



Arrive at least 10 mins early for each exam

Wait for the exams outside the back of the sports hall or on the tennis courts to the side.

Remember the equipment you
need for each exam

Black pens.

Highlighters.

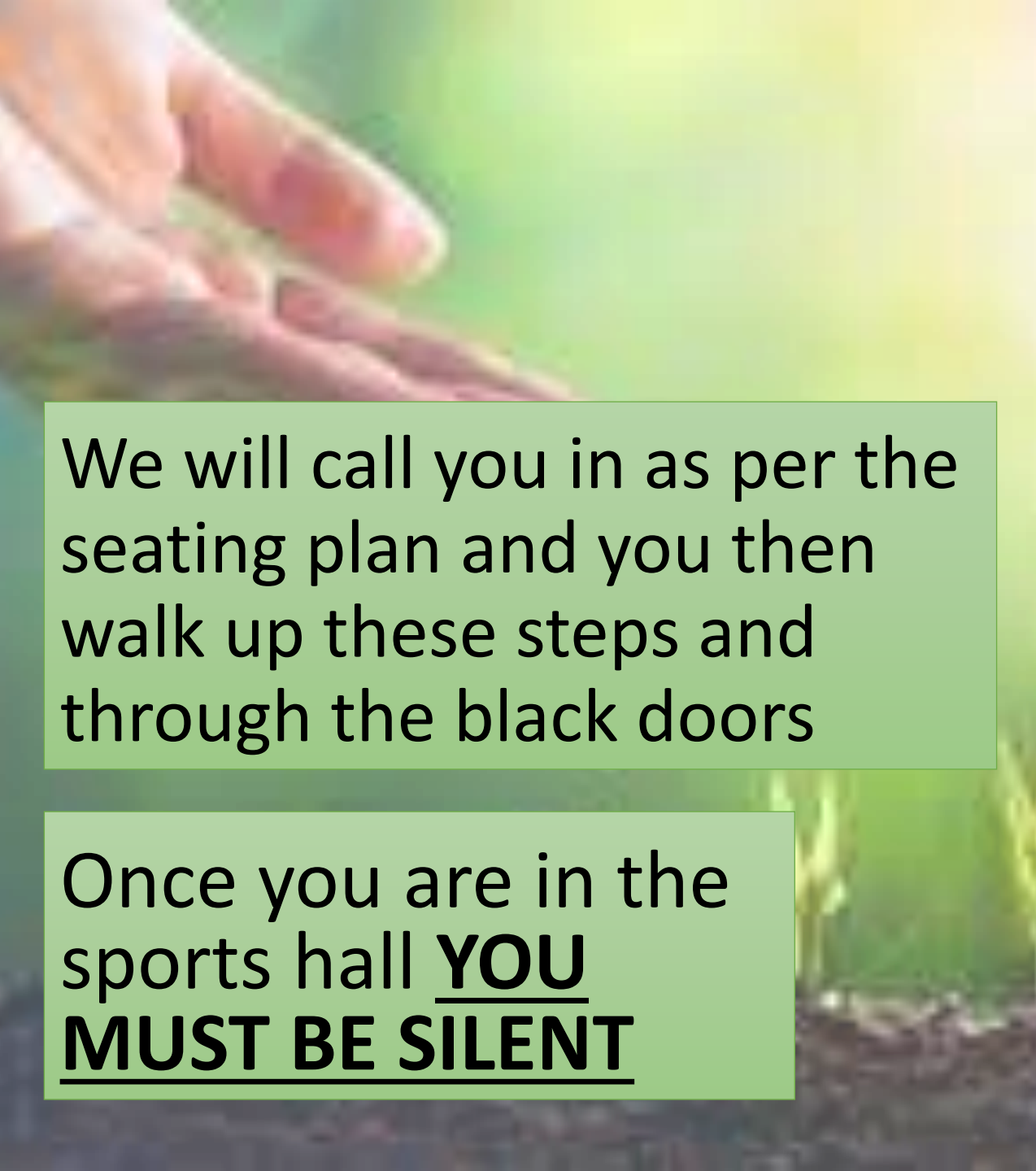
Compass, protractor, ruler, pencil.

Scientific calculator.





ALL watches and mobile phones
must be turned off and in bags as
well as ear pods.




We will call you in as per the seating plan and you then walk up these steps and through the black doors

Once you are in the sports hall **YOU**
MUST BE SILENT





The sports hall will be set out with individual desks. You will sit at the same desk for each exam. There is a clock and board at the front for the exam information and time.



Rules in the hall

- Whilst seated you **MUST NOT** communicate with anyone else.
- If you need something like more paper, raise your hand and wait.
- You are **NOT** permitted to leave the hall for the toilet unless it's an **emergency**.
- You must stay seated for the duration of the test.



Your PPE Schedule ...

YEAR 11 NOVEMBER PPE EXAM TIMETABLE - Wednesday 1st November - Friday 10th November

VENUE: SPORTS HALL *(unless notified otherwise)*

	SESSION 1: 8.40am	SESSION 2: 11.10am	SESSION 3: 1.50pm
Wednesday 1st November	STUDY HALL in normal timetabled lessons	RE - 1 hour 45 mins (183)	MEDIA (Component 1) – 1 hour 30 mins (40)
		After exam return to normal timetabled lessons	STUDY HALL in normal timetabled lessons
Thursday 2nd November	SCIENCE BIOLOGY (183) FOUNDATION - 1 hour 15 min. HIGHER - 1 hour 45 mins.	GEOGRAPHY - 1 hour 30 mins (83)	COMPUTER SCIENCE (Paper 1) – 1 hour 30 minutes (15).
	After exam return to normal timetabled lessons	STUDY HALL in normal timetabled lessons	STUDY HALL in normal timetabled lessons
Friday 3rd November	MATHEMATICS - 1 hour 30 mins (183) HIGHER - NON CALCULATOR. FOUNDATION – CALCULATOR.	ENGLISH LANGUAGE – 1 hour 45 mins (183)	WELL BEING TIME - HOME AT 2PM
	After exam return to normal timetabled lessons	After exam return to normal timetabled lessons	

Saint George's Sixth Form

Open evening – 14th November 2023

5pm – 7pm

Talks at 5pm & 6pm in the hall

Opportunity to visit our 20+ subjects and speak to teachers and current students

Applications open on Kent Choices on 1st November

Please wait until you have your PPE results before applying

Deadline for applications 19th January 2024



Saint George's
Church of England School

