

Saint George's Church of England Secondary Phase Newsletter



Term 5

Friday 22nd May 2026

From our Executive Headteacher

Dear Saint George's Parent,

Welcome to the May version of our secondary phase newsletter. Fitting a full term's work into just 5 weeks makes for an interesting time in school, not least as SATs, GCSEs, BTECs and A-levels are all up and running. In fact, Year 6 are 'done and dusted' with their externally assessed SATs papers, a hugely impressive effort from staff and pupils alike to have these run so well and so smoothly.

Suffice it to say at this point, to all students in Years 11 and 13 (and their parents!!), keep on going!!! Once the summer (finally) comes, you'll have earned it for sure. There is some great information once again in this edition, I hope you enjoy it. If you think of anything further that it would be useful to include, please do let us know via the main office; we may be missing something here that could really help pupils and parents.

Mr Murphy

Executive Headteacher

All Different, All Equal, All Flourishing

*Remember, we strive to be good Samaritans....we **care** for ourselves and others as unique and valuable creations, we **respect** all of the people and places in our school community and beyond and we **share** generously our time and talents to serve our school community.*

Always Remembering Blake

During the Summer, we will be installing a purpose built, decking and benching area complete with pink cherry blossom tree design as a memorial to Blake, our year 8 pupil who passed away so tragically last year. The area has been designed by a number of Blake's friends who came together for a series of design sessions and then met with members of Blake's family to share their ideas.

Alongside the 'pink' theme (which is very Blake of course!), the area serves an important function, with inward facing benches encouraging pupils to sit, talk and socialise with each other during break, lunch or before school.

We will update you on the progress of this important project via this newsletter, including its opening. In the meantime, have a look at the 3D computer generated model of how the area will look below! See also how you can donate to Blake's Pink promise, a charity who we are championing, and is already providing vital support services to young people in our local community, including here at Saint George's.

A huge thank you to everyone involved so far, including pupils, staff, family members and parents!



Blake's Pink Promise



In Loving Memory

Tragically, Blake's life ended far too soon, and words cannot express the heartbreak felt by her family, friends, and everyone who knew her.

Blake's Pink Promise charity will be setup and led by Blake's family and godparents and will exist to:

- Prevent child suicide through awareness and education
- Support bereaved parents with help, compassion and resources
- Ensure every young life is valued and never forgotten

Blake's Pink Promise

Every donation, no matter how small, **will make a difference.** Together, we can turn heartbreak into hope, turn pain into purpose and ensure Blake's legacy shines brightly for years to come.



gofundme

Whilst all schools in England are required to have Mental Health Leads and many include a large number of staff who are trained to support in this crucial area, it is not currently a mandatory requirement for every person who works in a school to receive this crucial training.

Blake's Pink Promise have created a petition to Government to try and change this. Please sign up at <https://shorturl.at/UDB2l>

Grief – Support Services

Here are some links to some wonderful services that may be able to provide some support and comfort to anyone who may be struggling.

[Get help - free, 24/7, confidential mental health text support service | Shout 85258](#) (for speaking with someone about anything)
Text 'SHOUT' to 85258 here for you 24/7

[Papyrus UK Suicide Prevention | Prevention of Young Suicide](#)

Call: [0800 068 4141](tel:08000684141)

Text: [88247](tel:88247)

Email: pat@papyrus-uk.org (for suicidal thoughts)

Then there is [Childline | Free counselling service for kids and young people | Childline](#)

Cruse Bereavement Care provides a range of free confidential support for adults and children, as well as a list of organisations and sources of help relating to bereavement, including other telephone hotlines. Visit the Cruse Bereavement Support website here www.cruse.org.uk

Barnardo's Child Bereavement Service - www.barnardos.org.uk/get-support/services/child-bereavement-service-general

Hope Again - www.hopeagain.org.uk

CHUMS - <http://chums.uk.com/kent-bereavement-service>

Winston's Wish - www.winstonswish.org

Holding On, Letting Go - <https://holg.org.uk/>

Slide Away - www.slideaway.org.uk

The Good Grief Trust - <https://www.thegoodgrieftrust.org/>

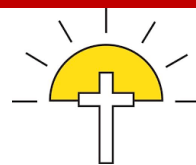
Untangle Grief - <https://untanglegrief.com/>

Child Bereavement UK - <https://www.childbereavementuk.org/>

Sue Ryder - <https://www.sueryder.org/grief-support/services/>

Amparo - <https://amparo.org.uk/refer/> (Telephone 03300889255)

Chaplain's Update



This term we have been reflecting through worship on how we put into practice our school values of Care, Respect and Share, and challenging ourselves to think about what that looks like for us as individuals and collectively. Pupils have also had opportunities to take action within the wider community to reflect our desire to ensure those values in action have a positive impact, wider than ourselves. We continue our commitment to support our local foodbanks and Values Ambassadors have spearheaded the 'Confectionary for Community' campaign using their growing understanding of the support that is needed locally.

Another group of Values Ambassadors have taken the role of researching the impact of the Lower Thames Crossing on our local community and are working together with Mrs Knowles and representatives of the LTC to ensure the environmental impact is minimised – keep your eyes out for an exciting competition next term!

Taking care of and respecting our environment is something important to us here at Saint George's and each week this term each community has shared the responsibility of ensuring our outside space is tidy and litter free. Thank you to all of you who joined us during the Easter break to litter pick and tidy together.

It was also my privilege this term to support a group of pupils who took part in a focus group with our local MP Dr Lauren Sullivan. Pupils of all year groups spoke maturely about the advantages and disadvantages of social media and engaged confidently in the conversations around protective measures they would see as effective. A number of these pupils will be involved in ongoing work in this area as Young Ambassadors, working with our local authority.

The government [consultation](#) on this topic continues until the 26th May so if you would like to, please do have your say also – there is a specific survey for parents to complete.

This term, the Christian Union group were delighted to welcome Ord. Giovanni Parrales for a four week special series entitled 'Belonging: No Filter'. These have been fun, reflective and challenging sessions that have encouraged pupils to know their value and be people who build each other up and create a school community that truly cares for others.

As we come to the end of this term this is my prayer for us all – knowing our value and valuing others is how we all as a Saint George's community demonstrate the Good Samaritans that we aspire to be.

A prayer of blessing:

*Dear God,
Bless us to become the Good Samaritans in our community;
To notice, to care, to take time,
To lift others up.
And to build a community of compassion and care.
Amen*



Saint George's is partnering with QuietCase

We wrote to you earlier in the year about the proposal to introduce secure phone pouches at Saint George's. Having shared the feedback of that consultation with you all recently and, having met with a great many pupils since then, I am pleased to confirm that we are partnering with QuietCase to become a phone-free school in June 2026.



Like many of you, we have watched with growing concern the impact that constant digital connectivity is having on the mental health and the concentration of young people. This initiative seeks to strengthen our existing 'on site, out of sight' policy that has been in place for two years and reflects our commitment to tackling the challenges posed by smart devices and social media. You may have noticed too, a proposal recently to strengthen existing Government guidance around this issue for schools.

Securely locking their devices in a tamper-proof QuietCase for the duration of the school day, students will experience far fewer distractions, improved focus in lessons, and stronger social interactions.

What this means for students:

Students will be issued a QuietCase, a lockable phone pouch. Every morning, they will turn their phone off, place it in the pouch, and lock it. The phone stays with them throughout the day, but they cannot access it until the end of the school day when the pouch is unlocked at dedicated unlocking stations situated around the school.

Students are being informed about this initiative during whole-school assemblies in the lead up to this launch and we imagine they will chat with you about this at home. As we transition to this new approach, we will provide continued guidance and support throughout the rollout, including further assemblies and staff-led sessions. Look out too for our information guide which will be coming to you soon and will be published on our website. This guide aims to answer questions that pupils or parents may have, as well as providing a clear outline of our proposed system.



We really appreciate your ongoing partnership in maintaining a focused and supportive learning environment. When our community works together, we ensure that every student has the space to build the confidence, resilience and respect they need to reach their highest potential.

Matt Lillie
Head of Secondary Phase

Simon Murphy
Executive Headteacher

Matilda



On Wednesday 11th March and Thursday 12th March, our talented students took to the stage for this year's annual school production of *Matilda JR*. Both performances were a tremendous success, with the second night completely sold out.

Since October, Miss Price, Miss Goldberg and Mr Mackey have been working closely with the students, holding rehearsals twice a week in preparation for the show. Their hard work and dedication, alongside that of the students, truly paid off, and we were blown away as the production came together so brilliantly in the final few weeks leading up to the performances.

We are immensely proud of all the students involved both on stage and off, whose commitment, enthusiasm, and dedication to the arts shone through in every moment of the show. From the acting, singing and dancing to the amazing work of the technical team backstage, the production was a fantastic showcase of their hard work and creativity.

The performances were met with glowing praise from the audience. Social media comments included: *"Fantastic performance by everyone," "It was as good as a West End show, well done!"* and *"Amazing show!!! And the dancers were exceptional!!!!"*

We also received wonderful feedback via email, including: *"Thank you for a brilliant show - one of your best! It was lovely to see so many students involved. As always, I am in awe of what you bring out of the students."*

Congratulations to everyone involved for delivering such an outstanding production.



Trust Concert



Last term, our fantastic Secondary Choir performed at the Trust Concert at The Woodville Halls, supported by our brilliant Student Tech Team, who took responsibility for sound and lighting throughout the event.

The choir gave a powerful performance of “Simply the Best” from *Tina: The Tina Turner Musical*, before joining students from across the Trust to perform a selection of songs from *The Greatest Showman*.

A special mention must also go to two of our choir members, Ruby and Isaac, who compered the evening superbly. They introduced each school with confidence and added some excellent moments of comedy throughout the concert.

Well done to all students involved – you represented the school brilliantly and should be very proud of your achievements.



YOUNG CARERS

you are not alone



SAINT GEORGE'S
CHURCH OF ENGLAND SCHOOL



A **young carer** is a child or young person who helps care for a family member who may have a disability, long term illness, mental health condition, addiction, or additional needs.



Registered young carers

are eligible for support such as 1-1 sessions with Imago support workers, respite, and travel saver bus passes.



If you think your child may be a young carer, please contact our Young Carers Lead

Miss Dadswell at

dadswellg@saintgeorgescofe.kent.sch.uk



We are committed to ensuring **young carers feel seen, supported,** and able to **thrive** in school.



PE Teachers celebrate Back-to-Back Gold at the School Games Award

We are delighted to announce that we have achieved the School Games GOLD Mark Award for the 2025/26 academic year.



The School Games Mark is a Government-led award scheme launched in 2012, facilitated by the Youth Sport Trust to reward schools for their commitment to the development of competition across their school and into the community, and we are delighted to have been recognised for our success.

Our sporting achievements this year include:

Year 7 Netball league winners
Year 9 Netball league winners
Grauesend Ladies Hockey Festival - Winners

The Barrett Cup - Cobham Hall Cross Country Girls' Champions

Sportshall Athletics
Year 8 Girls' 2nd place
Year 8 Boys' 3rd place
Year 7 Girls 3rd place
Year 7 boys 2nd place

District cross country Year 7 Boys 2nd
District cross country - Year 7 Girls 1st
District cross country - Year 8 boys 2nd

Rugby Year 8 Boys Colm Murphy Cup Champions
Rugby Year 9 boys 2nd place
Barbarians
League Rugby Year 8 boys 5th

Girls' Rugby Festival - 2nd place tournament

National Rowing competitors
Community cup
Basketball league games and Quarter Finalist in the Kent Cup Year 9
Football league games and cup games
Kent Schools' Swimming
Kent Schools' Cross Country
Kent Schools' Athletics

District Athletics
Cricket festival
Cricket matches

Young leaders supporting Primary School Sports Days

With a total of 300 young people competing in local inter-school competitions this year, we are extremely proud of our pupils for their dedication to all aspects of school sport, including those young volunteers, leaders and officials who made our competitions possible.

As part of our application, we were asked to fulfil criteria in the areas of participation, competition, workforce and clubs, and we are pleased that the hard work of everyone at our school has been rewarded this year.

A special thanks to: Miss Thomas, Mrs Chenu, Miss Blackwood, Mr Knight, Mr Poppy, Mr Murray, Mr Bright, Mr Cunningham, Mr McQuirk, Mr Twine, Mr Henry, Mr Ward, Mr Bulger.

We look forward to applying once again in 2027!



Visit from our local MP



A group of pupils took part in a focus group this term with our local MP Dr Lauren Sullivan. Pupils of all year groups spoke maturely about the advantages and disadvantages of social media and engaged confidently in the conversations around protective measures they would see as effective. A number of these pupils will be involved in ongoing work in this area as Young Ambassadors, working with our local authority.

The government consultation on this topic continues until the 26th May so if you would like to, please do have your say also – there is a specific survey for parents to complete at

<https://www.gov.uk/government/consultations/growing-up-in-the-online-world-a-national-consultation>

St George's Day Parade

A parade to celebrate St George, who "stood for tolerance and integration" took place on Thursday 23rd April 2026 in Gravesend town centre.

Students from both Saint George's primary and secondary phases thoroughly enjoyed taking part together in the vibrant parade with more than 1500 students from 23 schools.

With perfect weather on the day, the atmosphere was truly one of community brought together.

The annual event, organised by Cohesion Plus, marked its 20th year of celebrations in Gravesend.



Fundraising for Aspire



On Thursday 2nd April the school held a non-uniform day, and staff bake sale to raise money for Aspire as one of our Science Technician's Mrs Sawyer will be swimming the English Channel in relay for them in August.

The non-uniform day raised £232.59, and the bake sale raised £132.70.

Mrs Sawyer thanks the school community for their support.

More details about the Aspire Channel Swim can be found at <https://www.aspirechannelswim.co.uk/>



Careers

Newsletter

Term 5



Value Ambassadors introduce the Lower Thames Crossing Project

During Worship, our Value Ambassadors introduced the Lower Thames Crossing Project to our students. The team explained the route, key facts, along with the pro's and con's of the project. The team also launched a competition, supported by Lower Thames Crossing, to redesign the internal courtyards in the main block of the school. We look forward to sharing the winning entries with you in our next newsletter.



CAREERS...

Describes our journey through life, learning and work!

GUIDANCE MEETINGS

Our Year 10 career guidance meetings are continuing. These meetings are designed to get the students thinking about their next step on their career journey.

WORK EXPERIENCE

All our Year 10 and 12 students will be completing a week of Work Experience from Monday 13th July. All students must register their placements in Unifrog as soon as possible.

Details of how to register a placement can be found in Teams.

If you are able to offer a placement to a student, please contact us at careers@saintgeorgescofe.kent.sch.uk

 **ECO-AREA DESIGN COMPETITION!**

Design an eco area for Saint Georges School under one of the following categories

VEGETATION
MINDFULNESS
WILDLIFE
RECYCLING

DEADLINE: MONDAY, 22ND JUNE 2026

THE WINNER WILL BE GIVEN A QUEENSHIP PASS FOR A WHOLE TERM! THEIR DESIGN WILL ALSO BE CREATED IN THE SCHOOL! RUNNER UPS WILL GET SWEET SAUCE!

The competition is being supported by Lower Thames Crossing, who will help us bring the winning design to life.

The Eco-Area will be made in the courtyards of the Main block.

Submit your designs to Mrs Knowles in the Careers Hub or email knowlesh@saintgeorgescofe.kent.sch.uk



CountrySide Careers Fair at Detling Showground

I attended the CountrySide Careers Fair at Detling Showground on Thursday 7th May. Whilst there I spoke to the exhibitors about their companies and the job roles that they offer. I learnt about apprenticeships that are available and the exam results that you need.

I made a number of new contacts that have agreed to support our careers programme. I am looking forward to working with these new companies. We are always looking for people to support of careers programme. If you can support us, please get in touch.

Mrs Knowles - Personal Development Coordinator



Get in touch today

In need of support or guidance on your next steps? Would you like to offer feedback? Please click below to email us

Your Careers Team

Are you a parent/carer or family member who is happy to talk about their job or Career journey with our students?

Are you an external company that would like to support our students or appear in our next edition?

Contact Us



Job Profile of the week

Government Social Researcher

Being a Government Social Researcher involves studying and analysing various aspects of society, like people's behaviour, views, and needs. This then helps the government make informed decisions. Social researchers in government work on a wide variety of programmes and projects and are at the heart of building better policy that can improve people's lives.

To do this, social researchers use a range of methods; for example, they design and gather data through surveys that aim to quantify a population's views. They also conduct interviews, and lead focus groups that explore what people think in greater depth, and run experiments to decide what kinds of social programmes work best. Alongside this, social researchers often make use of transferable and in demand coding skills to analyse and visualise large amounts of data.

They use these results to provide recommendations to policymakers. Social research helps government make better policy and deliver better services, using data and research to guide government decisions and delivery.

Location

All over the world

Hours

37 hours per week
Usually Monday to Friday, 8:30am to 5pm

Salary

Salary varies depending on where you are based.
Average salary is £34,000

Qualifications & Training

This depends on the country that you work in.
In the UK, there are Degree Apprenticeship Programmes that take 4 years. You will need a minimum of 5 GCSEs, including Maths & English Language at Grade 4 or above.

Unifrog - available to students and parents

At Saint Georges C of E School we are privileged to have access to Unifrog. A web based platform used for our Careers programme. To access Unifrog, students should use their school email address. Parents should use the email address that they have registered with the school.

We recommend that students look at the skills profiles and Quiz profiles to help them choose their pathways.





Career Statistics in your local area

Labour Market Information for Gravesham

	Total Population aged 16-64 (2024)	Total % in employment 24-25	Total % unemployed	Gross disposable household income per head
Uk Average	148,448	76.6%	3.4	£23,192
Gravesham	100,671	85.6%	3	£24,201

Employee Jobs by industry – Top 5 in Gravesham (%)

	Total Population aged 16-64 (2024)
Administration & Support Service Activities	18.2
Wholesale and retail trade; repair of motor vehicles and motorcycles	13.6
Education	10.6
Construction	9.1
Human and Social Work activities Transport & Storage Accommodation and Food Services	7.6

Data quoted from NOMIS (Office of National Statistics)

Useful Websites:

Virtual Work Experience

Find an apprenticeship

Unifrog

Amazing Apprenticeships

Are you in year 11 and looking for a level 2 course next year?



At Saint George's Sixth Form, our new Level 2 curriculum complements our existing Level 3 provision, ensuring every student is supported at the right stage of their learning. This pathway enables students to gain confidence and achieve strong results before progressing successfully to Level 3.

Entry requirements: Five grade 3s or above at GCSE

Courses you will study across one year:

- GCSE Mathematics
- GCSE English Language
- BTEC Level 2 Health and Social Care
- BTEC Level 2 Personal Growth and Wellbeing
- Employability Skills

Not sure what the right level is for you?

Get in touch with the Saint George's Sixth Form team, who will be happy to talk you through your options, and help you make the best next step for you.

Head of Sixth Form | Mrs M Pye | Email: pyem@saintgeorgescofe.kent.sch.uk



Find out more about the courses we have on offer at saintgeorgescofe.kent.sch.uk

Get into Teaching

Get into Teaching with Local Schools

T Teach First | Training Partner

School-Centred Initial

TEACHER TRAINING

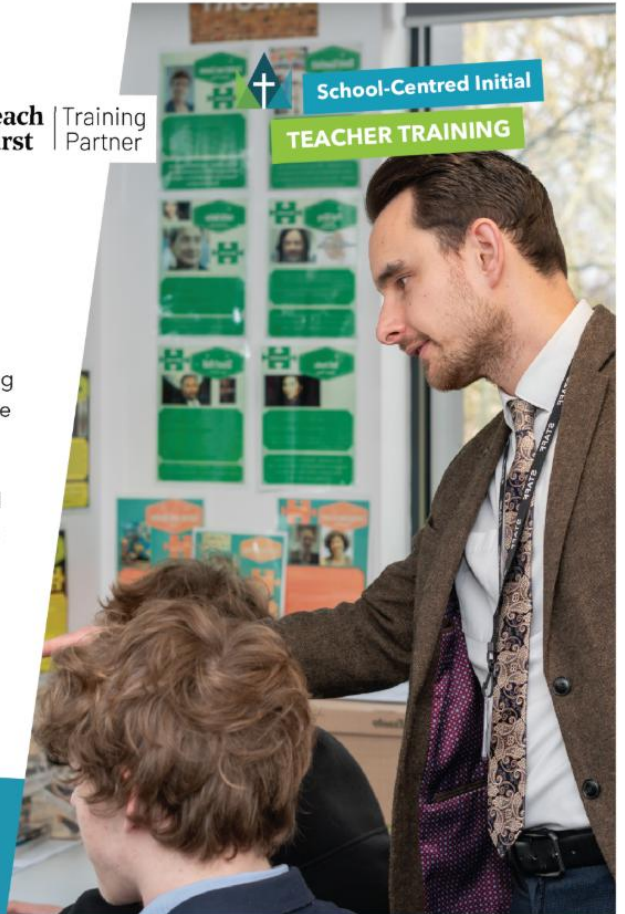
Have you or someone you know always wanted to train to teach?

Aletheia runs a successful school-centred teacher training programme in partnership with **Teach First**, giving you the chance to train in local primary and secondary schools.

We will support you through the application, interview, and training process, tailoring the programme to help you start your teaching career confidently.

2026 - 27 marks our third year training local teachers - **100%** of our 2024 - 25 cohort are now completing their first year of teaching, and many 2026 trainees have already secured local positions for September.

If you or someone you know is interested in becoming a teacher, please get in touch:
growwithus@aletheia-trust.org.uk





THE OLIVE GROVE

Breakfast Menu

8:00am – 8:30am

DOUBLE BACON/SAUSAGE - £2.70

SINGLE BACON/SAUSAGE - £2.00

SAUSAGE McMUFFIN - £3.00

CHOC AU PAIN - £1.60

CROISSANT - £1.40

HASH BROWNS (2) - £1.00

TOAST (2) - £1.00

HOT CHOCOLATE - £1.20

TEA - 60P

The Olive Grove – New Street Vibe Food

FROM THE OLIVE GROVE

INTRODUCING OUR

STREET VIBE FOODS

BOLD FLAVORS • FRESHLY MADE • FULL OF ATTITUDE



TERIYAKI
CHICKEN
NOODLES

SWEET & SAVORY!



JERK CHICKEN
& RICE

SPICY KICK!



CHICKEN
TIKKA
CURRY

INDIAN FLAVORS!

AVAILABLE UNDER SINGLE ITEMS ON THE FUSION APP!

GRAB YOURS BEFORE IT'S GONE!

FUEL
YOUR
DAY

The Olive Grove – Lunch Menu



Saint George's
Church of England School

	Monday	Tuesday	Wednesday	Thursday	Friday
WEEK ONE 20/04, 04/05, 15/06, 06/07, 14/09, 05/10	CHICKEN KORMA	SAUSAGE ROLL	CHICKEN FAJITA	PASTA BOLOGNESE	BREADED COD
	RICE/MINI NAAN BREAD	POTATO WEDGES	COLESLAW	GARLIC BREAD	CHIPS
	PEAS	BEANS	SALAD	BROCCOLI	BEANS
	ROASTED VEGETABLE KORMA	VEGAN SAUSAGE ROLL	SPINACH & MUSHROOM WRAP	MEDITERRANEAN PASTA	ONION BHAJI BURGER

WEEK TWO 27/04, 11/05, 01/06, 22/06, 13/07, 21/09, 12/10	KATSU CHICKEN CURRY	HOT DOG	MINCE BEEF & ONION PIE	BBQ CHICKEN WRAP	BEEF BURGER
	SAFFRON RICE	POTATO WEDGES	NEW POTATOES	HERB ROASTED POTATOES	CHIPS
	NAAN BREAD	PEAS	GREEN BEANS	CORN ON COB	BAKED BEANS
	CAULIFLOWER KATSU	VEGGIE HOT DOG	ROOT VEG PIE	BREADED VEG WRAP	VEGGIE BURGER

WEEK THREE 30/04, 18/05, 02/06, 29/06, 20/07, 31/08, 28/09, 19/10	BUTTER CHICKEN CURRY	ENCHILADAS	ROAST CHICKEN	SAUSAGE & PEPPER PASTA	FISH FINGERS
	RICE/NAAN BREAD	COUS COUS	ROASTED NEW POTATOES	GARLIC BREAD	CHIPS
	GREEN BEANS	SALAD	COLESLAW	PEAS	SPAGHETTI
	QUORN CHILI	ROASTED VEG WRAP	CHEESE & ONION PUFF	MACARONI CHEESE	VEGGIE SAUSAGES



Safeguarding – Exam Season

Some useful tips around exam stress, personal wellbeing, anxiety are in the below links which may support your son/daughter over this challenging period:

<https://www.mind.org.uk/for-young-people/feelings-and-experiences/tips-for-coping-with-exam-stress/>

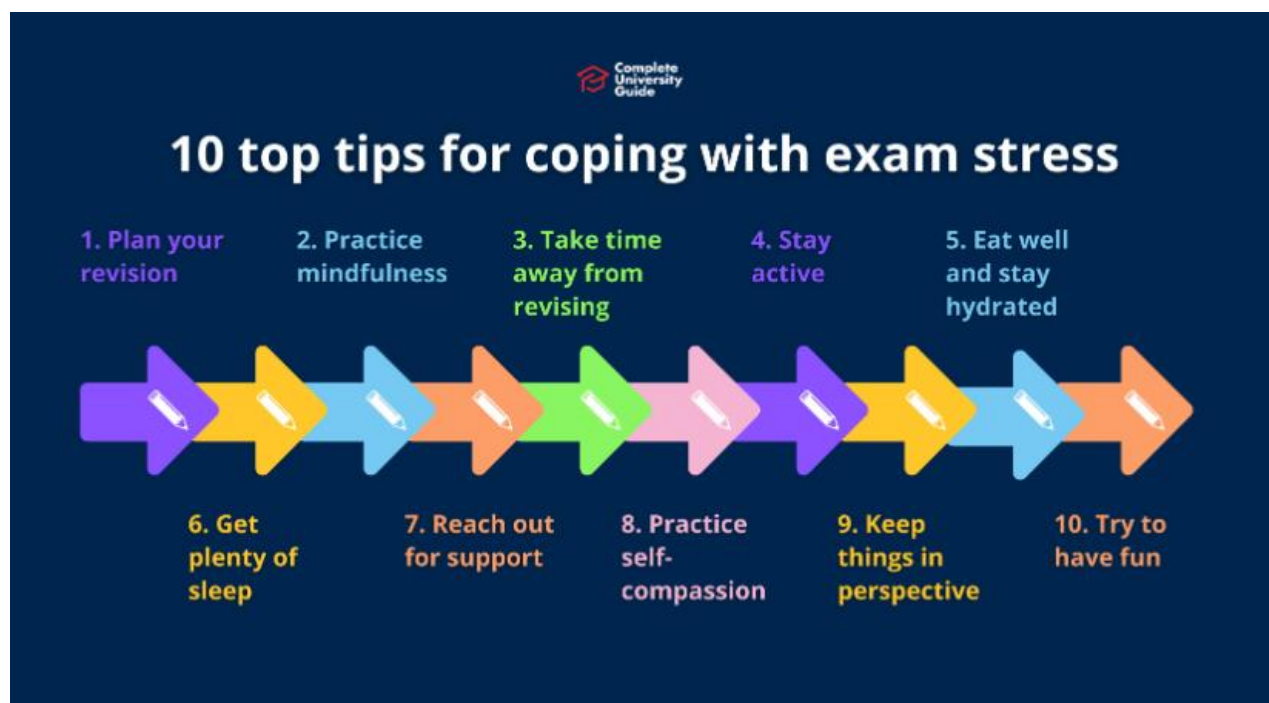
<https://www.healthforteens.co.uk/feelings/exam-stress/?location=Kent>

<https://www.place2be.org.uk/media/5nvihodn/navigating-exam-season-guide-for-students.pdf>

<https://www.place2be.org.uk/media/pnxjiuwl/navigating-exam-season-guide-for-parents.pdf>

Please do remind your son/daughter that they can access their teachers/Form Tutors/Community Leader/Head of Year/Mrs Alpnar for additional support:

- ThomasL@saintgeorgescofe.kent.sch.uk RSL Year 11
- AlpnarK@saintgeorgescofe.kent.sch.uk Deputy Lead DSL/Mental Health Lead



Safeguarding – Exam Season



NIGHT BEFORE

- CHECK (AGAIN)**
CONFIRM THE LOCATION AND STARTING TIME.
- TRY NOT TO CRAM**
DO A LIGHT REVISION OF YOUR NOTES INSTEAD.
- GET ORGANISED**
LAY OUT YOUR CLOTHES AND PACK YOUR BAG.
- SET YOUR ALARM**
ALLOW PLENTY OF TIME TO GET READY IN THE MORNING.
- VISUALISE SUCCESS**
PICTURE YOURSELF BEING CALM AND CONFIDENT IN YOUR EXAM.
- GET A GOOD NIGHT'S SLEEP**
WIND DOWN EARLY AND AIM FOR EIGHT HOURS OF SLEEP.

EXAM CHECKLIST



ON THE DAY

- EAT BREAKFAST**
GIVE YOUR BRAIN A BOOST WITH A GOOD BREKKIE.
- ARRIVE EARLY**
AIM TO GET THERE WITH PLENTY OF TIME TO SPARE.
- TAKE A MOMENT**
BEFORE HEADING IN, TAKE SOME DEEP BREATHS OR DO SOME STRETCHES.
- SKIP THE STRESSORS**
STEER CLEAR OF PEOPLE OR SITUATIONS THAT MIGHT STRESS YOU OUT.
- GET COMFORTABLE**
FIND YOUR SEAT, SET YOURSELF UP AND GET TO WORK.
- TREAT YOURSELF**
PLAN A LITTLE REWARD FOR AFTER YOU'VE FINISHED.

Out of Hours Safeguarding Contacts

For Immediate Safeguarding Concerns: -

- Please call The Front Door Team if you are concerned about the safety and wellbeing of a young person 03000 411111 or 03000 419191 (out of hours): -
- Call 111 option 2 for mental health/crisis team
- Call 101 if you suspect a crime
- Call 999 if there is a danger to life

If you are a student and are worried about your mental health or emotional wellbeing, you can: -

- Call NELFT for mental health support (24/7) 0300 555 1000 email: nelft.nhs.uk
- Call Childline for immediate support around a variety of issues 0800 1111 email: childline.org.uk
- Call FEARLESS 0800 555111 to report any crime or concern anonymously

Additionally, for any safeguarding concerns or worries, please contact:-

- CaveE@saintgeorgescofe.kent.sch.uk
- AlpnarK@saintgeorgescofe.kent.sch.uk

Dates for your Diary

Term 6	
Monday 1st June	Term starts
Monday 29 th June	Year 12 Geography Trip (Epping)
Tuesday 16 th June	Year 9 Vaccinations
Wednesday 24 th June	Year 10 History Trip (London Dungeon)
Thursday 25 th June	Year 11 Prom
Friday 26 th June	Year 13 Prom
Tuesday 30 th July	Year 6 to 7 Transition Evening
Wednesday 1 st July	Year 12 Induction Day
Thursday 2 nd July	Year 6 to 7 Transition Day
Friday 3 rd July	Year 6 to 7 Transition Day
Saturday 4 th July	Saint George's Summer Fair
Monday 6th July	Staff Development Day
Friday 10 th July	Saint George's Sports Day
Tuesday 14 th July	Trust Sport's Day
Wednesday 15 th July	Year 9 Chessington Trip
Thursday 16 th July	Year 7 rewards Day
Monday 20 th July	Colour Run
Tuesday 21st July	Term Ends





Saint George's
Church of England School

SUMMER FAIR

Saturday 4th July 2026

Saint George's Secondary Field

1:00pm – 4:00pm

Stall Holders Wanted

We're inviting local small businesses to join us!

- Stall fee: £20
- Keep 100% of your takings
- A brilliant opportunity to be part of a fun, community-focused afternoon!

Please note: all stallholders must have their own Public Liability Insurance and will be responsible for their own stall setup.

Raffle Prize Donations Needed

We'd be so grateful if any businesses/ individuals could donate a gift or offer a pledge, such as:

- Vouchers
- Free classes/treatments
- Tickets
- Gifts or experiences

If you can contribute, please email your offer by 30th April.

Please contact us via
sgprimarypa@gmail.com

ellenor.*
hospice care in your home or ours



ellenor's Inflatable Fun Run

A fun-filled inflatable course
for all the community



TO BOOK
search
ellenor events
or scan here

Sunday 7 June
2026

Swanley Park,
New Barn Road,
BR8 7PW

Kindly supported by



ellenor.org      @ellenorcharity Registered Charity No: 82541

Enter our **FREE** family competition



Enter at Prize Draws
on our home page -
good luck!



A great activity for the holidays!

We're a Mum and two daughters team
creating educational, history based fun
Kent Quiz Trails!

They liven up a healthy
family walk!

FREE TO ENTER!



WHAT'S ON?
IN KENT.COM

WIN

Download
the WOLK
app here!



WHAT'S ON?
IN KENT.COM



We've teamed up with
What's On In Kent to give away a
'Best of Kent Explorer Adventure Pack'!

Top Prize: One lucky winner will win a wicker picnic hamper
with plates, cutlery and glasses, one each of the Quiz Trail
short stories books, 5 Quiz Trails of your choice and lots of
sweet treats!

Three runner-up winners will each win
3 Quiz Trails of your choice!

Enter on our website
www.QuizTrail.co.uk

*Closing date 31st May 2026 at
11.59pm. Free to enter - no purchase
necessary.



Download the app
to discover
hundreds of
activities and
events going on
in Kent!

Special offers too!

www.QuizTrail.co.uk

Quote Discount
Code
DISCOUNT10
at our checkout





Saint George's
Church of England School



Aletheia
Academies Trust

Hire our facilities

Scan the QR
code to book



Our incredible facilities are available to book on evenings, weekends, and holidays

Whether you are looking for outdoor pitches, versatile drama spaces, or dedicated areas for sports and learning, we have the perfect space for your needs.



To book now scan the QR code at the top or contact:
lettings@aletheiatruster.org.uk or on 01474 533 082 (ext. 3001)

Prices start
from £19 p/h



Scan to book



Host your event

Whether you are hosting a team event, organising a creative workshop, or planning a special gathering, we offer versatile spaces to suit your needs. From outdoor pitches to fantastic drama studios, we have the perfect environment to bring your ideas to life.

Explore our range of spaces:

- Dance studio
- Drama studio
- Sports Hall
- 3G Multi Use Games Area
- Classrooms
- Primary and Secondary Hall



Saint George's Church of England School, Meadow Road, Gravesend, DA11 7LS
saintgeorgescfe.kent.sch.uk